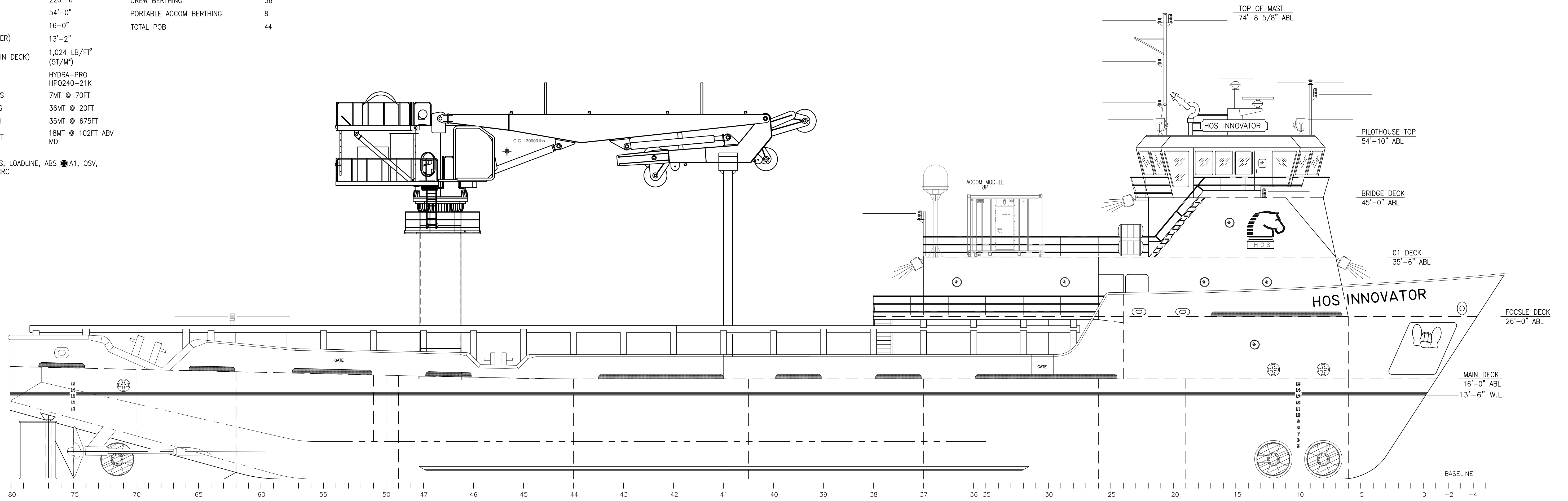


PRINCIPAL PARTICULARS

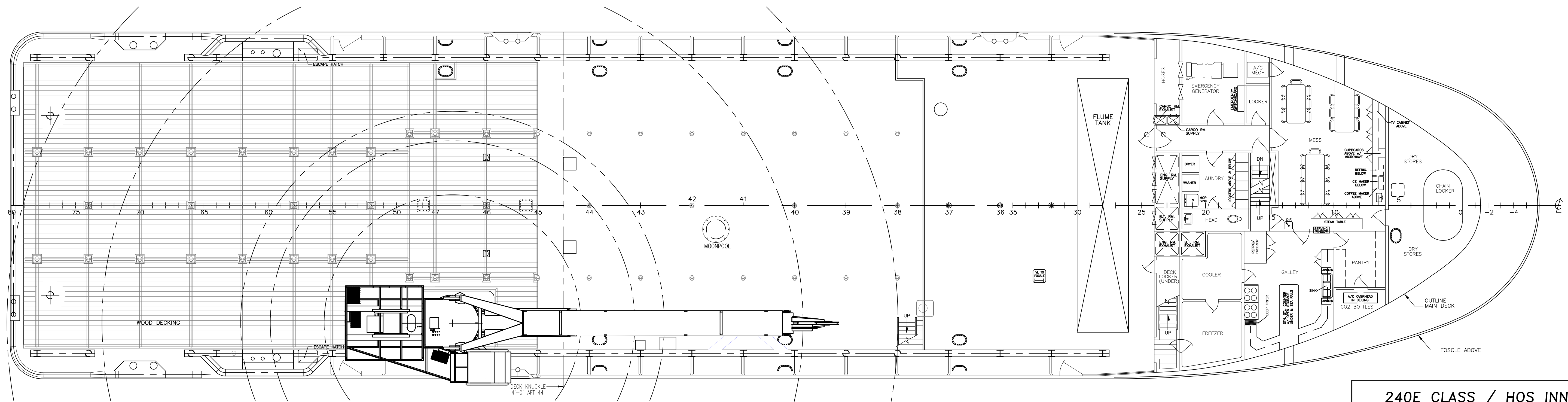
LOA	240'-0"
LBP	220'-6"
BEAM	54'-0"
DEPTH	16'-0"
LOADLINE DRAFT (SUMMER)	13'-2"
DECK LOAD RATING (MAIN DECK)	1,024 LB/FT ² (5T/M ²)
KNUCKLE BOOM CRANE	HYDRA-PRO HP0240-21K
MAX LIFT @ MAX RADIUS	7MT @ 70FT
MAX LIFT @ MIN RADIUS	36MT @ 20FT
MAX LIFT @ MAX DEPTH	35MT @ 675FT
MAX LIFT @ MAX HEIGHT	18MT @ 102FT ABV MD
REGULATORY: USCG SUB I & L SOLAS, LOADLINE, ABS <input checked="" type="checkbox"/> A1, OSV, <input checked="" type="checkbox"/> AMS, DPS-2, ACP, CRC	

ACCOMMODATIONS

VESSEL CREW STATEROOMS	14
CREW BERTHING	36
PORTABLE ACCOM BERTHING	8
TOTAL POB	44



OUTBOARD PROFILE



MAIN DECK
16'-0" ABL

240E CLASS / HOS INNOVATOR

THIS DRAWING, DESIGN CONCEPT AND SPECIFICATIONS ARE THE PROPERTY OF HORNBECK OFFSHORE SERVICES AND ARE FURNISHED ON A CONFIDENTIAL BASIS WITH AN EXPRESSED UNDERSTANDING THAT THEY WILL NOT BE COPIED IN ANY MANNER USED FOR MANUFACTURE, SOLD, TRANSFERRED, NOR USED TO THE DETRIMENT OF SAID FIRM WITHOUT WRITTEN PERMISSION.

HORNBECK OFFSHORE SERVICES

DRAWN BY:	S. MAUL	240'-0" X 54'-0" X 17'-0"		SIZE	D
CHECKED BY:	M. STANSBURY	OUTBOARD PROFILE & GENERAL ARRANGEMENT		REV.	12
APPROVED BY:	J. GUIDRY	TASK No. 7913	DRAWING No. 1.101	SCALE: 1/8" = 1'-0"	DATE: 02/27/12
		HULL No. 326	SY: LVI	SHEET 1 OF 2	

LAST SAVE/PRINT: 1/9/2024 10:03 AM
ENG: JSULLIVA
SHEET: ANSI D 22X34

16

15

14

13

12

11

10

9

D

D

C

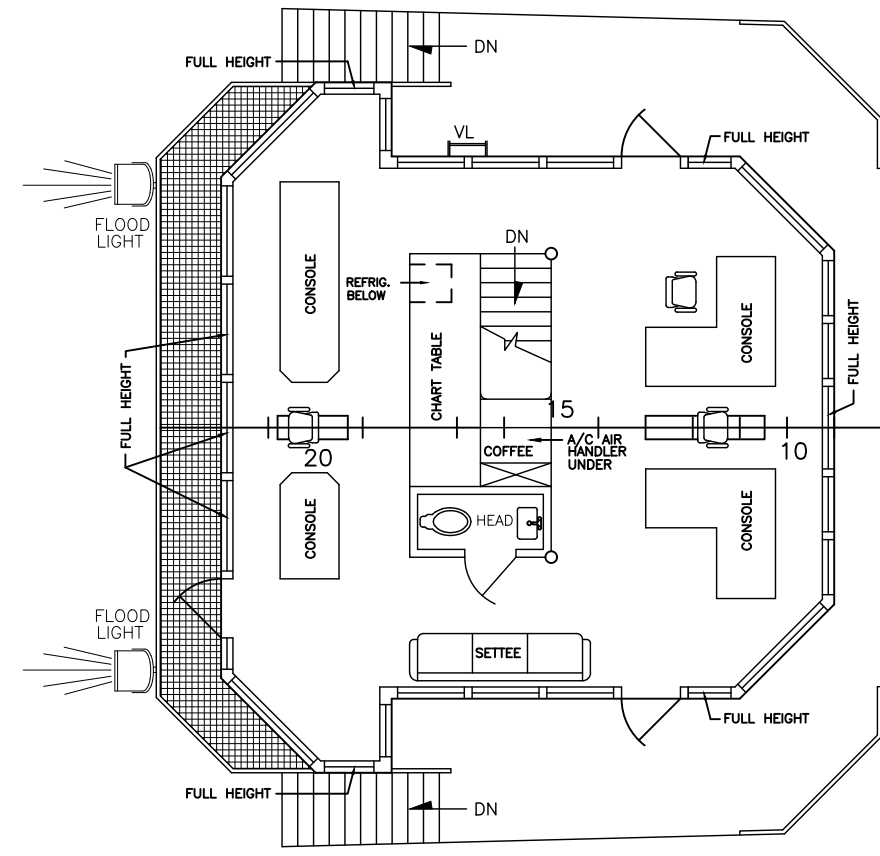
C

B

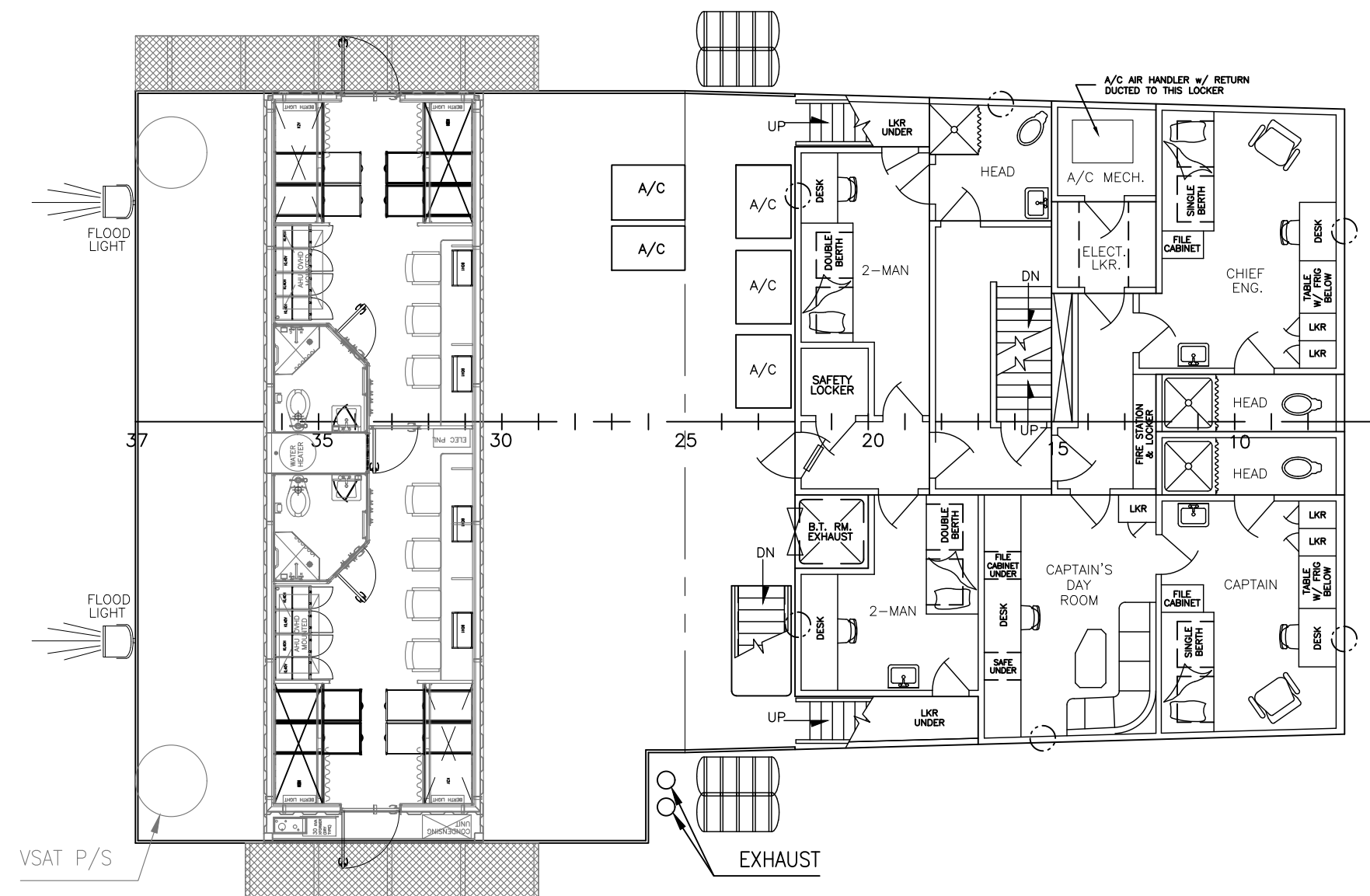
B

A

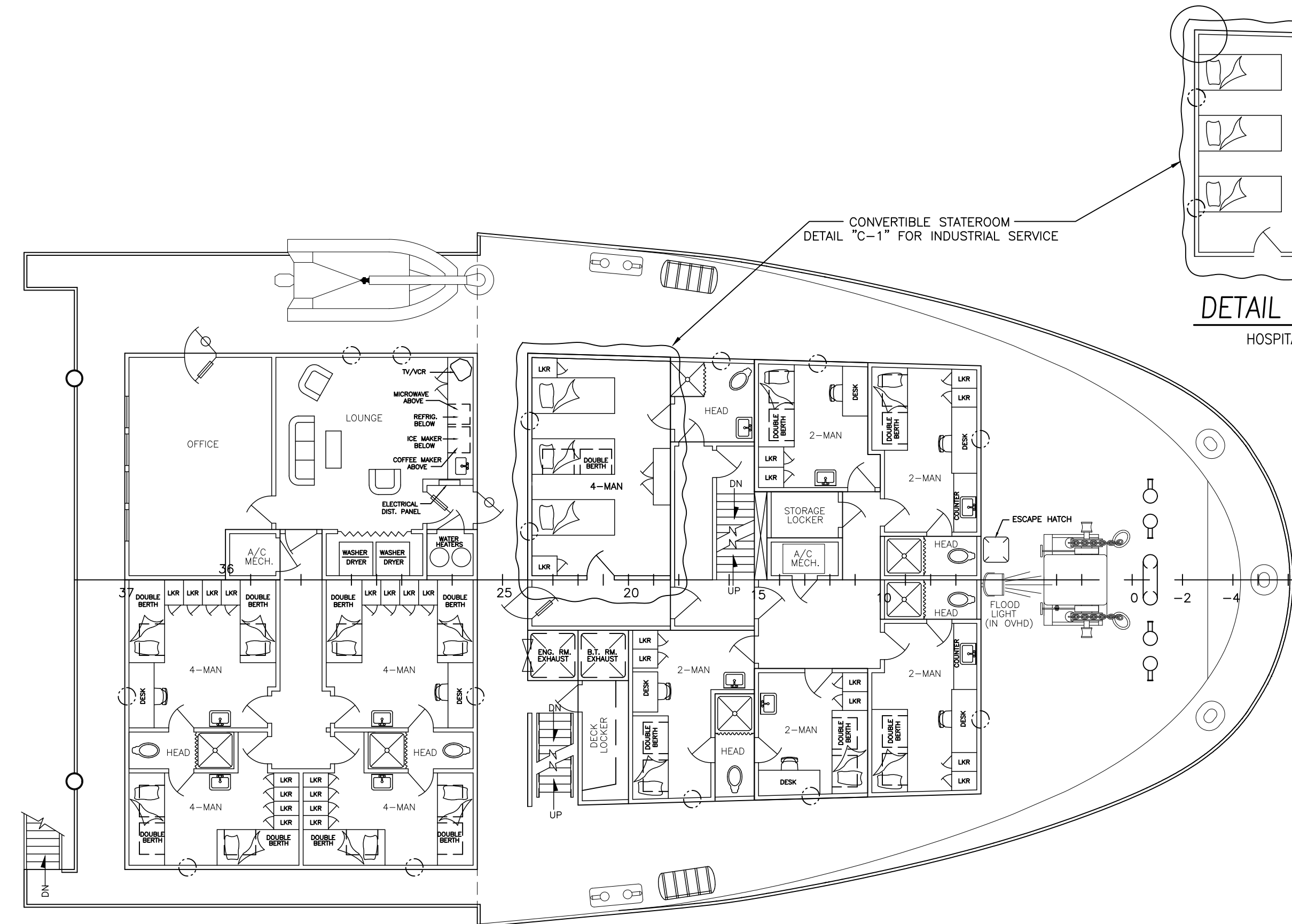
A



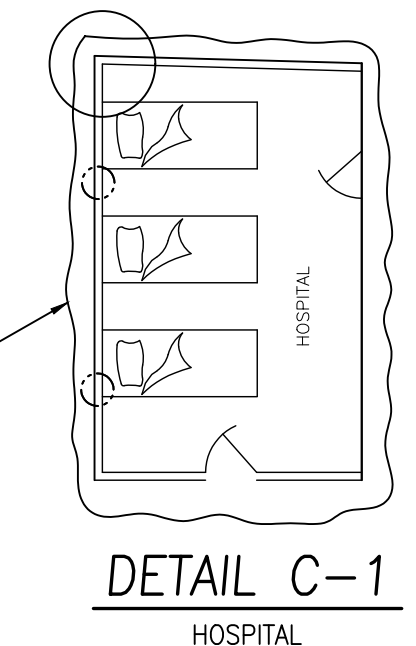
BRIDGE DECK
45'-0" ABL



01 DECK
35'-6" ABL



FOCSLE DECK
26'-0" ABL



<p>THIS DRAWING, DESIGN CONCEPT AND SPECIFICATIONS ARE THE PROPERTY OF HORNBECK OFFSHORE SERVICES AND ARE FURNISHED ON A CONFIDENTIAL BASIS WITH AN EXPRESSED UNDERSTANDING THAT THEY WILL NOT BE COPIED IN ANY MANNER USED FOR MANUFACTURE, SALE, TRANSFERRED, NOR USED TO THE DETRIMENT OF SAID FIRM WITHOUT WRITTEN PERMISSION.</p> <p>HORNBECK OFFSHORE SERVICES</p>	OUTBOARD PROFILE & GENERAL ARRANGEMENT		SIZE D
	TASK No. 7913	DRAWING No. 1.101	SCALE: 1/8" = 1'-0"
	HULL No. 326	SY: LVI	DATE: 02/27/12
			SHEET 2 OF 2

16

15

14

13

12

11

10

9